

November 2023

Spatial Data Services for Local Government

Demelza Potter & Simon Parker

Spatial Data

- **Government departments are very data centric**
- **Lots of databases and systems**
 - Built Environment
 - Case Management
 - Digital Platform
 - Business Intelligence
 - ...
- **What organisations need:**
 - Consistent, reliable and up to date base mapping
 - Easy access other data sources to support their work

Review of Spatial Data Services

1. Ordnance Survey Data

1. Data Hub
2. Premium Plan Data (outside of the PSGA)

2. Cadcorp Open Data Service

3. EPC Data Service

1. Ordnance Survey Data

- **Cadcorp data partner for over 25 years**
 - Understand how to read the data
 - Provide dedicated loaders to load the data
 - Knowledge of how to use the data
- **Dedicated OS wizards within Cadcorp SIS**
- **Managed service from Cadcorp to apply updates**
- **Can provide all the OS data portfolio**

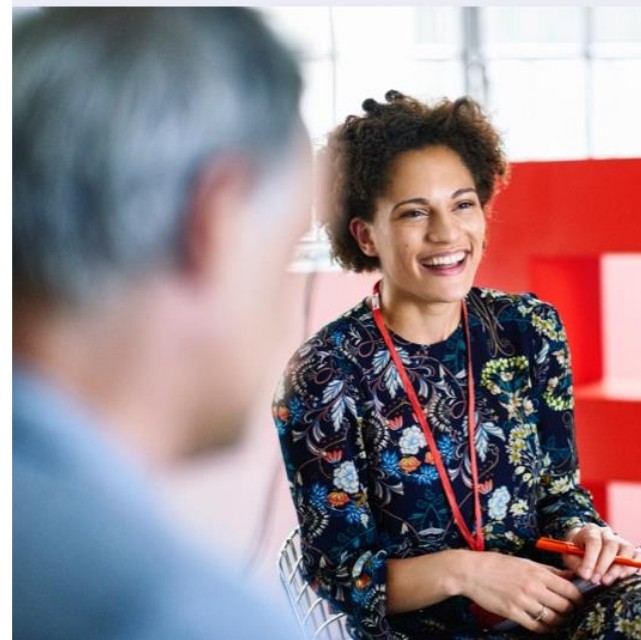
We're an
OS Premium
Partner



OS Data Hub

- **Cadcorp SIS 9.1 supports**
 - OS Select+Build
 - OS NGD API - Features
 - OS NGD API - Tiles

We're an
OS Premium
Partner



OS Premium Plan Data

- **Cadcorp can provide all the OS data portfolio**
- **Most requested dataset is Terrain 5**
 - Grid ASCII and GML
 - Contours in SHP



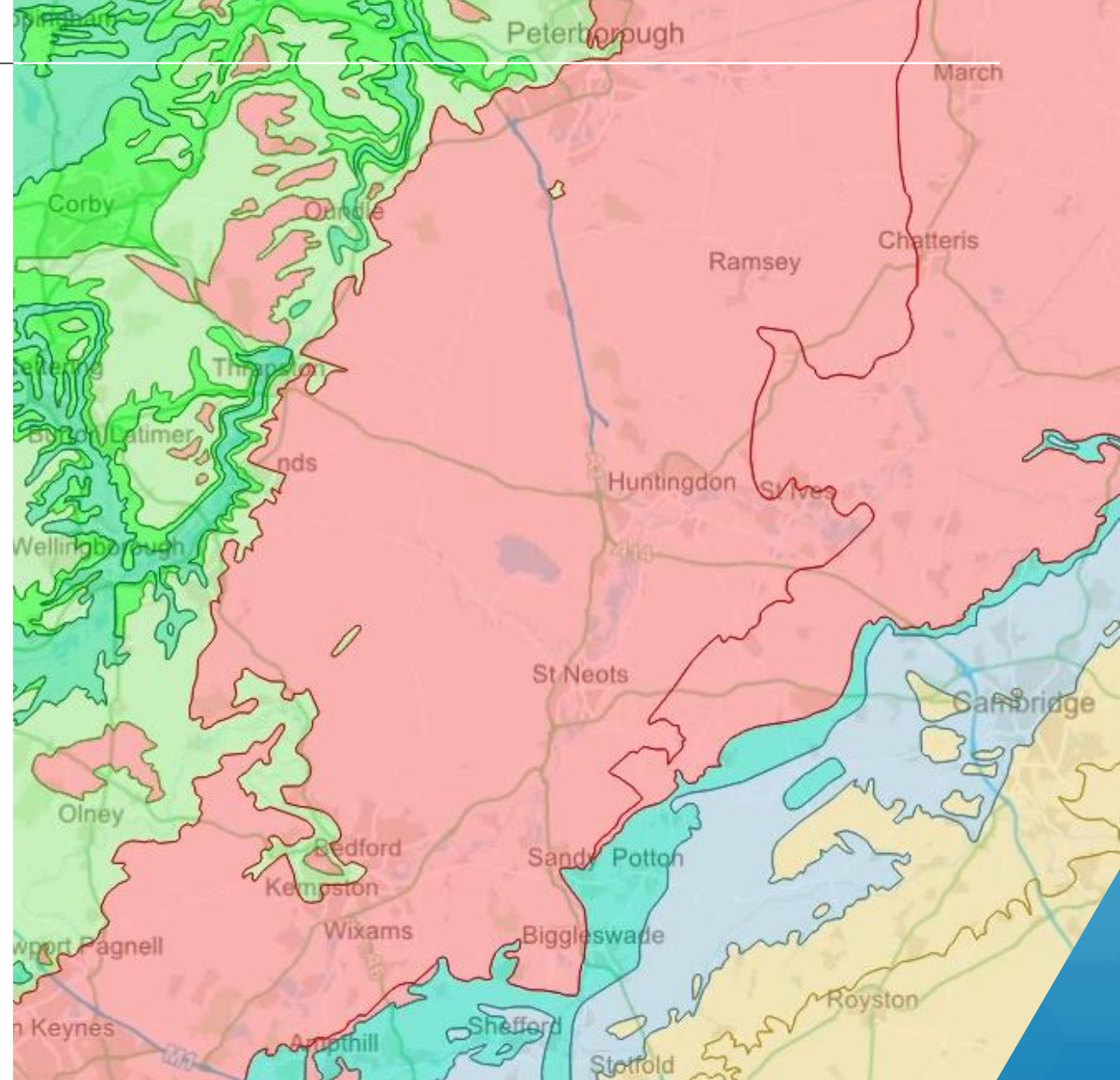
2. Cadcorp Open Data Service

A cloud vector service of open data from:



Cadcorp Open Data Service

- **What's included:**
 - Access to 60+ datasets
 - National coverage (where applicable)
 - 6 monthly updates
 - Extract/export to own repository
 - Easy access to data from PostGIS with dedicated user interface



Use Cases & Benefits

Use Cases:

- Flooding zones and defenses to identify at risk areas
- Conversation areas and other Planning constraints
- Radon gas for Land Charges search

Benefits:

- Compliments other cloud software and data services
- Central location for multiple datasets from organisations
- Convenient and cost effective
- Vectors from PostGIS provide more flexibility

3. Cadcorp EPC Data Service



Search 10,000s of LocalGov articles ...



Politics & Policy HR Finance Transformation Health & Social Care Analysis Opinion Products Jobs Advertise

Analysis



Greening Up: why, where and how

Nicholas Boys Smith, director of Create Streets, sets out how local councils can improve the level of urban greenery and why they should.

Opinion



Don't build up or out

Daniel Leon, director at Square Feet Architects, looks at how clever architecture can help mitigate the housing crisis.

LocalGov
Work With Us

Start working

05 October 2023



Cadcorp launches new EPC Data Service

Cadcorp has launched a new cloud hosted data service, providing Energy Performance Certificate (EPC) ratings for all residential properties in Great Britain.

Easy access to EPC data provides significant benefits to many industry sectors including government, land and property, environment, and finance. Integrating EPC data with a Geographic Information System (GIS) plays an essential part in enabling organisations to identify properties that meet specific target EPC ratings.

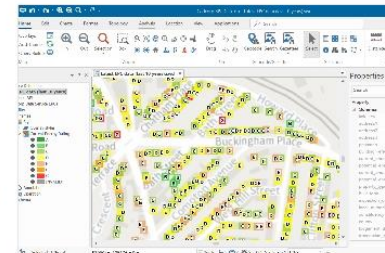
The Cadcorp EPC Data Service includes:

- Access to the latest EPC ratings for all residential properties within Great Britain
- Quarterly updates provided and managed by Cadcorp
- Access to over 10 million properties in total
- Vector access to a spatial database allowing:
 - o Analysis of specific properties for example current and potential housing stock
 - o Theming to easily identify clusters of EPC ratings
 - o Sharing across the organisation
 - o Exporting to other systems, such as a property or asset management



Each record has been geocoded based on the national Unique Property Reference Number (UPRN) to allow organisations the opportunity to analyse each location individually or as part of a wider area.

Specific applications of the EPC Data Service include organisations that are required to conduct a housing stock condition survey. It can be used to identify discrepancies between existing EPC data readings and the official data



SIGN UP

For your free daily news bulletin

LocalGovJobs

Agricultural Advisor - Land Management & Grazing Systems

£39,944 up to £46,057 per annum, commensurate with qualifications and experience

The role also includes advising, supporting and collaborating with land owners in relation to on-farm research. Falkland Islands (FK)

Recuriter: Falkland Islands Government

Highways Safety Inspector

£39,615 - £47,736 per annum (Pending pay award)

At the Royal Borough of Kensington and Chelsea, we put local people and businesses at the heart of everything we do. Kensington and Chelsea, London (Greater)

Recuriter: The Royal Borough of Kensington & Chelsea Council

Head of Service Highways Construction and Maintenance Services

£67,800 - £74,300

This role provides a unique opportunity to shape the future direction of the Service for the

Salford City Council

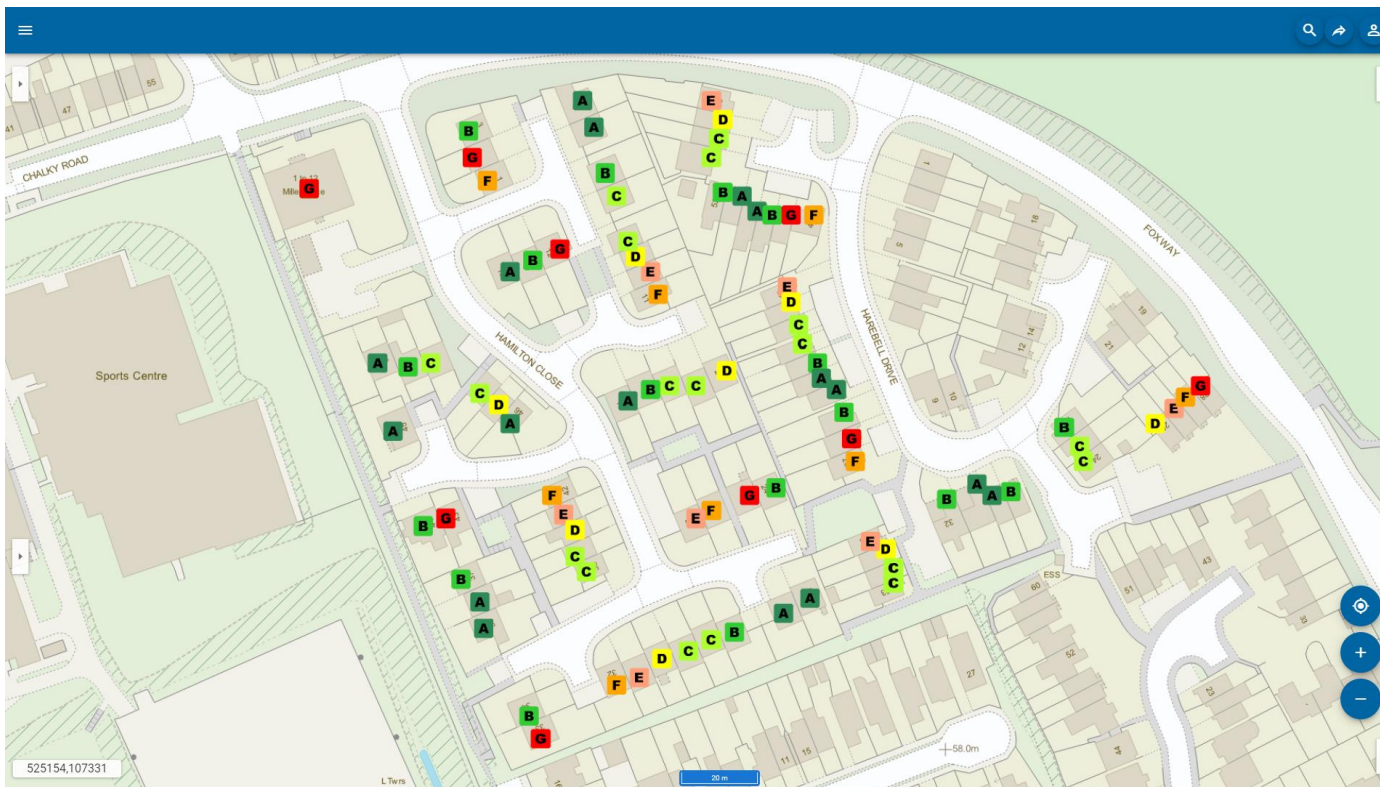


Did you know
LocalGov is on
LinkedIn?

EPC Data Service

What's included:

- Latest residential EPC's
- Geocoded with UPRN
- National coverage
- ~90 attributes
- Quarterly updates
- Extract/export to own repository



Use Cases & Benefits

Use Cases:

- Housing stock upgrades to look at ensuring council properties meet the appropriate EPC ratings by 2030
- Identification of unlicensed HMO's
- Help identify those in fuel poverty to provide government grants

Benefits:

- Compliments other cloud software and data services
- Convenient
- Exporting to other systems e.g. property management

Demo

- **Spatial Data Services in Cadcorp SIS Desktop**
 - Add Overlay Wizard
 - OS Data Hub
 - Cadcorp Open Data Service
 - EPC Data Service

Review of Spatial Data Services

1. Ordnance Survey Data

1. Data Hub
2. Premium Plan Data (outside of the PSGA)

2. Cadcorp Open Data Service

3. Cadcorp EPC Data Service

t. 01438 747 996 | e. info@cadcorp.com | w. cadcorp.com