



www.blueskymapshop.com

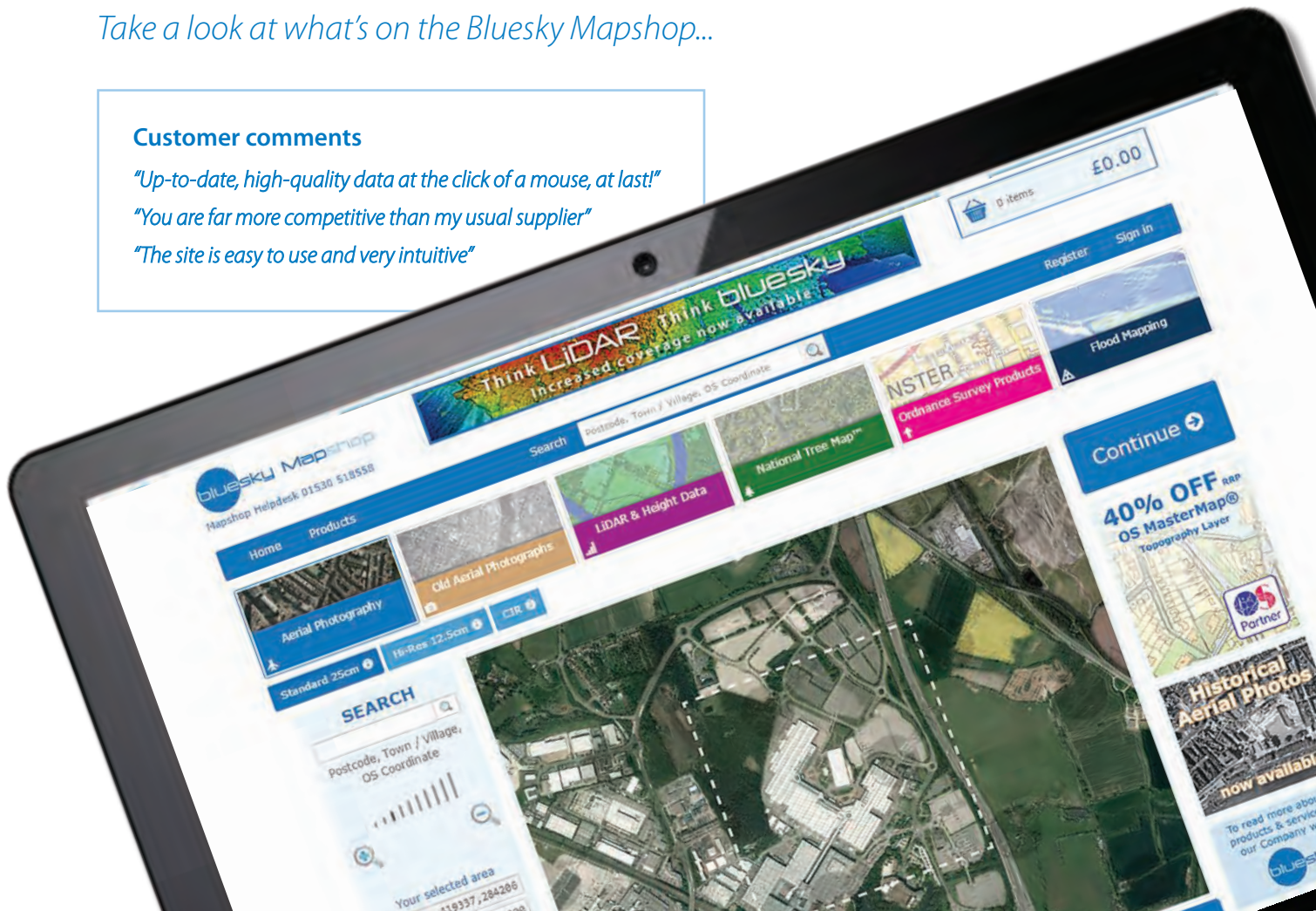
Take a look at what's on the Bluesky Mapshop...

Customer comments

"Up-to-date, high-quality data at the click of a mouse, at last!"

"You are far more competitive than my usual supplier"

"The site is easy to use and very intuitive"



GIS Data at your fingertips

Welcome to the Bluesky Mapshop

The Bluesky Mapshop provides customers with instant access to an ever increasing range of environmental data including several free datasets. The Mapshop has been developed to make it as easy as possible to locate your area of interest through street name, postcode, town name or coordinate searches. Customers also have the option to upload KMZ or ESRI Shapefiles to identify the areas they require. It is easy to select different products which are displayed in a large viewing window. Users can then navigate around their area of choice using the zooming, scrolling and panning tools. The Mapshop has been designed for customers to be able to benefit from discount pricing on bundled purchases and offers customers **40% discount** off the list price of Ordnance Survey MasterMap® Topography Layer. A helpline and Live Chat function are available to walk and talk you through any questions you may have.



Offers



Visit the Bluesky Mapshop and receive a **15% discount** off Aerial Photography, Photogrammetric Height products, National Tree Map™, Thermal Imagery, Colour Infrared and NDVI.

Enter the following in the promotion code box

15OFFBSMS16

Set up an account today!

www.blueskymapshop.com/account/register

Selecting your Data

Our easy-to-use 'Product Select' page will help tailor the data to your requirements, enabling you to choose the resolution and format. The drop-down categories divide our data into relevant groups.

Aerial Photography					
Details	Image Date	Resolution	Format	Price	Order
Aerial Photo 25cm	16/07/2015	25cm	JPG	£20.00	<input type="checkbox"/>
Aerial Photo Hi-Res 12.5cm	16/07/2015	12.5cm	JPG	£20.00	<input type="checkbox"/>
Colour Infrared	16/07/2015	50cm	Tiff	£20.00	<input type="checkbox"/>
Aerial Photography Alternative Years					
Old Aerial Photographs					
LiDAR & Height Data					
National Tree Map™					
National Soil Map					
Ordnance Survey Products					
Geological Mapping					
Flood Mapping					
Thermal Imagery					
Free Data					

Aerial Photography



Bluesky is a specialist in the acquisition of aerial surveys and the processing and creation of high-quality imagery products. By investing in the latest technology Bluesky ensures the quality, accuracy and consistency of its imagery is of the highest standard. Bluesky maintains national aerial photography datasets which are updated every 3 years and available off-the-shelf.



Aerial Photo - 25cm
available in .jpg .tif .ecw



Aerial Photo Alternative Years - 12.5 / 25cm
available in .jpg .tif .ecw



Aerial Photo Hi-Res - 12.5cm
available in .jpg .tif .ecw



Colour Infrared - 50cm
available in .8-bit TIFF

Delivered in Mosaic or Tiles

For larger areas, you have the option of ordering the data in tiles instead of the standard mosaic.



Mosaic



Tiles

Old Aerial Photography



Tens of thousands of aerial photos from the 40s to the 90s are available to search at the click of a button. Search for your area of interest by Postcode, Street name, City or Grid Reference.



Old Aerial Photo
available in .jpg .tif



Letter of Authenticity
For presentation in legal proceedings, stating that the photographs have not been altered from their original state and were exposed on the date stated.



Old Aerial Photo Archive Pack

- 1 digital archive scan of your image.
- 1 A4 print of an extract of the archive scan centred on the site required.
- A certificate of authenticity to prove the date
- The flight report confirming search result undertaken
- A digital & printed copy from the most recent digital aerial photo from the rectified dataset for comparison.

Old Aerial Photography Selection Function

The Bluesky Mapshop viewing window displays the aerial photos for your area. You can click on the 'camera' icon and preview your aerial photo. The 'Product Select' page shows dates, details and extra information.

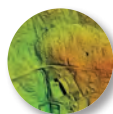
Details	Image Date	Product Type	Letter of Authenticity	Printed Version	Delivery	Price	Order
23_86_085 Colour 1:10000	13 Jun 1986	Standard Scan	No thanks	No thanks	Download	£16.63	<input type="checkbox"/>
69_88_043 Colour 1:14000	03 Aug 1988	Standard Scan	No thanks	No thanks	Download	£16.63	<input type="checkbox"/>
7703_2_918 Black and White 1:5000	01 Jan 1977	Standard Scan	No thanks	No thanks	Download	£16.63	<input checked="" type="checkbox"/>
7703_2_917 Black and White 1:5000	01 Jan	Standard Scan	No thanks	No thanks	Download	£16.63	<input type="checkbox"/>

LiDAR Height Data



LiDAR - (Light Detection and Ranging) provides the most accurate and detailed terrain and surface data possible from a remote sensing platform.

LiDAR data is ideal for planning, flood modelling and visualisation. LiDAR DTM (Digital Terrain Models) and DSM (Digital Surface Models) data are available from 50cm resolution, with vertical accuracies of up to 50mm. Coverage of most major urban areas is available including our new East Anglia and South East of England high-point density data.



LiDAR DTM

available in .Arc ASCII Grid .ASCII XYZ .dxf

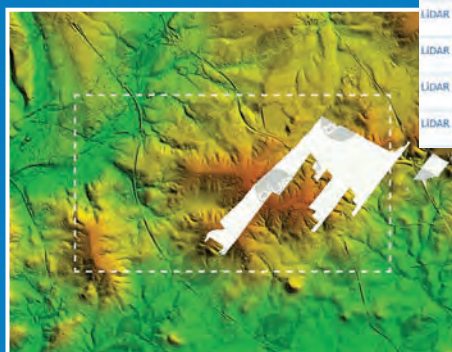






LiDAR DSM

available in .Arc ASCII Grid .ASCII XYZ .dxf

Coverage Indicator

Most of our products have full coverage for England and Wales. In the rare cases where the coverage is not complete, our coverage indicator icon will appear informing you of the coverage percentage available.



Height Data						
Details			Image Date	Resolution	Format	Price Order
LIDAR DTM - 1m		Preview	2010	1m	Arc ASCII GRID	E2,545.38 <input checked="" type="checkbox"/>
LIDAR DSM - 1m		Preview	2010	1m	Arc ASCII GRID	Calculate <input type="checkbox"/>
LIDAR DTM - 2m		Preview	2010	2m	Arc ASCII GRID	Calculate <input type="checkbox"/>
LIDAR DSM - 2m		Preview	2010	2m	Arc ASCII GRID	Calculate <input type="checkbox"/>



NOTE
Only 85% of AOI is covered by this data

The coverage will be reflected in your price. You only pay for the data you receive.

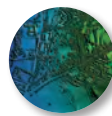
Photogrammetric Height Data



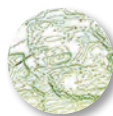
Detailed measurements of the height of the ground and the structures on it can provide a new dimension to the understanding and management of the local, national or global environment. Bluesky's range of off-the-shelf and bespoke height products, derived from stereo aerial photography, are designed to take geographic information to the next level. These datasets will be updated on a 3-year cycle.



Photogrammetric DTM - 5m
available in .Arc ASCII Grid .ASCII XYZ .dxf



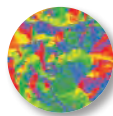
Photogrammetric DSM - 2m
available in .Arc ASCII Grid .ASCII XYZ .dxf



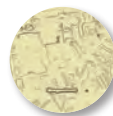
5m Contours
available in .Arc ASCII Grid .ASCII XYZ .dxf

DTM (Digital Terrain Model), nationwide coverage of the terrain excluding buildings and vegetation, with a 5-metre grid spacing.

DSM (Digital Surface Model), nationwide coverage including buildings and vegetation, with a 2-metre grid spacing.



Aspect - 5m
available in .8-bit TIFF



Slope - 5m
available in .8-bit TIFF

Area Selection Tools - Polygon Drawing / Shapefile Upload

In addition to the standard width and height selection boxes - these new tools allow users to draw and edit their own polygon areas in the Viewer Window. ESRI Shapefile and KMZ upload is available too.

Your selected area

510579,192220

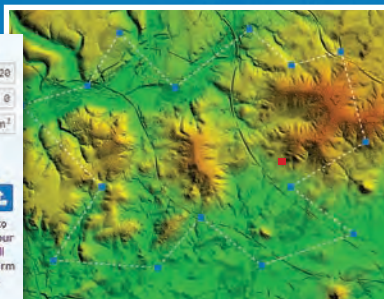
W E N

Area 0 m²

Area selection tools

Click on the viewer to create the vertices of your shape (the polygon will automatically close to form a complete polygon).

Reset



Move Map



Draw Box



Draw Polygon



Edit Polygon



Upload ESRI Shapefile / KMZ

National Tree Map™



National Tree Map™ (NTM) provides the location, height and canopy extents for trees over three metres in height. The dataset covers all of England and Wales, with Scotland coming soon. The data can be provided in a variety of formats for both GIS and CAD users. The dataset comprises height points, polygonal crown and idealised crown extents. Ideal for use with aerial photography or OS MasterMap®.

The 3 layers of NTM (all included):



Canopy Polygons
available in .shp .tab .dxf



Idealised Crowns
available in .shp .tab .dxf



Height Points
available in .shp .tab .dxf

Pricing Bundles

We offer discounts for multiple product combinations for the same Area of Interest. Look out for the pop-under menus for potential savings and offers!

National Tree Map™					
Details	Image Date	Resolution ⓘ	Format ⓘ	Price	Order
National Tree Map™ ⓘ ⓘ	27/06/2010	N/A	SHP ▾	£94.92	<input checked="" type="checkbox"/>
★ Add any of the following products for this AOI and get 10% off their list price! ★					
Aerial Photo - Standard 25cm NDVI - NDVI					
Aerial Photography					
Details	Image Date	Resolution ⓘ	Format ⓘ	Price	Order
Aerial Photo ⓘ ⓘ	27/06/2010	25cm ▾	JPG ▾	£70.23 £70.41	<input checked="" type="checkbox"/>

National Soil Map



The National Soil Map is the flagship soil data product from Cranfield University. It is a 1:250,000 scale map of England and Wales, showing the locations of the 297 distinct soil associations wherever they occur within the countries. The types of soil are described, along with attributes such as the soil fertility and drainage. General descriptions of the underlying geology and typical cropping and landuse are also provided. A URL link to extremely detailed supplementary soil information is also included.

- *The National Soil Map is useful for anyone wanting detailed soil information at 1:250,000 scale.*
- *The National Soil Map is essential for evidence-based land management and planning across England and Wales.*
- *The National Soil Map is being used by most of the major water companies, many universities, consultants and governmental bodies.*



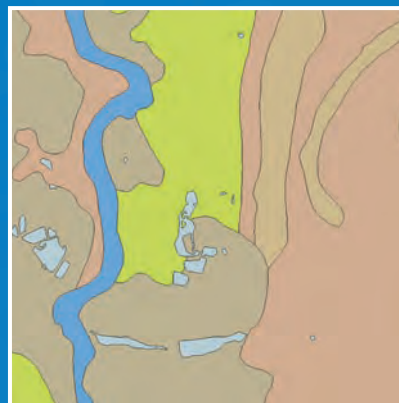
National Soil Map
available in .shp .tab .dxf

ArcGIS Style files

Most of our vector products (included OS mapping) are supplied with ArcGIS style files.



Unstyled
data



Styled
data

Thermal Imagery



Thermal imagery is available for selected cities across the country and allows you to identify poorly-insulated properties with high building heat loss. In addition it can be used to identify illegal dwellings or 'beds in sheds'. Thermal mapping may also be used for forestry studies to identify diseased or infested trees, and to assist in pollution studies.



Thermal Imagery
available in .8-bit TIFF

Data Preview

When purchasing data, you can preview your area from the 'Choose your Product' menu.

Thermal Imagery

Details

Image Date

Resolution

Format

Price

Order

Thermal Imagery

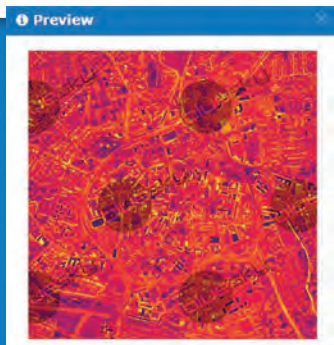
Preview

23/11/2013

50cm

8-bit TIFF

£78.49



If ordering whilst using a drawn polygon or your own ESRI Shapefile/KMZ, your data will preview in its cut-out shape.

Products

Thermal Imagery

50cm resolution

1544 m x 1552 m

1.7 km²

23/11/2013

8-bit TIFF

Mosaic

Download

£44.35

Delete

Empty basket

Generate quote (pdf)

Update

Ordnance Survey Products



As an Ordnance Survey partner we provide aerial mapping products. OS maps provide visualisation and geographical context alongside other geographic data sources.



OS MasterMap® Topography Layer
available in .shp .tab .dxf



OS Street View®
available in .jpg .tif .ecw



OS VectorMap® Local
available in .shp .tab .dxf



OS 1:25 000 Scale Colour Raster
available in .shp .jpg .tif .ecw



OS MasterMap® Imagery Layer - 25cm
available in .jpg .tif .ecw



OS Open Map - Local
available in .shp .tab .dxf

Nominate Licence to Third-Parties

When purchasing data on behalf of a third party end user, the Bluesky Mapshop allows users to enter details to ensure the data will be licensed correctly.

Don't forget:

We are currently offering **40% OFF** the List Price for OS MasterMap® Topography Layer.

Are you purchasing this on behalf of a third party? ☒

Please enter licensee's details:

Name

Company name

Address

Town/City

County

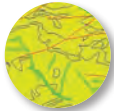
Postcode

When purchasing data on behalf of a third party and user, please follow these simple steps to ensure the data will be licensed correctly: Please forward our Conditions of Licence to the third party and client (the licensee). A PDF copy of these will be found in your download link. If purchasing Ordnance Survey data please fill out a OS Mapping Subcontractor Licence which can be downloaded [here](#) Q2.

Geological Mapping



British Geological Survey (BGS) is a data-rich organisation with over 400 datasets in its care including: environmental monitoring data, physical collections (borehole core, rocks, minerals and fossils), records and archives. A few of the more popular datasets are available on the Bluesky Mapshop.



BGS Data
available in .shp .tab .dxf

Products available:

DiGMapGB-10 | DiGMapGB-50 | GeoSure | Aquifer Designation Data
Susceptibility to Groundwater Flooding | Geological Indicators of Flooding
Infiltration SuDS Map | Permeability Data | WellMaster Hydrogeological Database

Pay by Worldpay or Invoice on Account

The Bluesky Mapshop allows credit card payments through Worldpay's secure online payment gateway. Users can also apply for a credit account, to allow payment by invoice. You can enter your own purchase order reference too.



Our Terms & Conditions and licencing details can be easily viewed and printed.

Order Summary		
Enter PO no. or Customer Order ref: <input type="text"/>		
This is mandatory when paying by invoice.		
Product	Qty	Price
OS MasterMap® Topography Layer	1	£142.60
Products:		£142.60
VAT (20 %):		£28.52
Total:		£171.12
Your Credit Account		
Your Credit Limit:		£1000.00
Remaining Credit:		£439.00
		<input checked="" type="checkbox"/> Invoice me

[View Terms & Conditions](#)

[View Ordnance Survey Licence](#)

Confirm you accept the Terms & Licensing Conditions ☒

JBA Comprehensive Flood Map of Great Britain



Flooding cannot be prevented but we can learn to understand the cause and manage the risk so that we are better prepared. JBA data provides a comprehensive flood risk management service including flood risk assessment, flood risk mapping and modelling and planning and construction of mitigation measures that manage flood risk to acceptable levels.



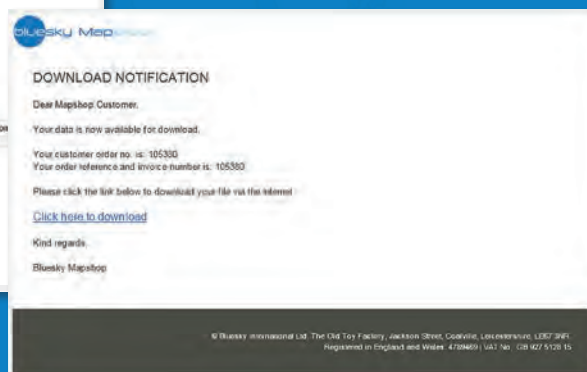
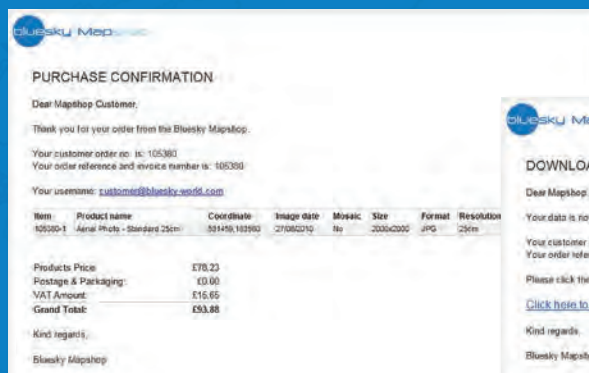
JBA Flood Data
available in .shp .tab .dxf

Layers included:

Undefended river | Undefended coastal | Surface water

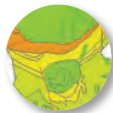
Email Delivery

The Bluesky Mapshop will send you an instant confirmation email, with a separate download email following within a few moments. Simply click the link and download licensed data to your computer.



Open Data

Available to download
free of charge

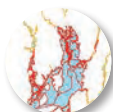


1:650k BGS Data
available in .shp .tab .dxf



Contains:

Bedrock | Dykes | Fault | Superficial



Flood Maps
available in .shp .tab .dxf



Environment
Agency

Contains:

Flood Alert | Risk Areas | Warning



English Heritage
available in .shp .tab .dxf

Contains:

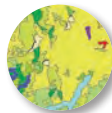
Battlefield | Listed Buildings | Protected Wrecks |
Registered Parks & Gardens | World Heritage Sites



Natural England
available in .shp .tab .dxf

Products available:

CroW | Farming | Marine | EcoNet | Paths & Parks
Priority Habitats | Reserves



Landcover Maps
available in .shp .tab .dxf

Contains:

1:100000 inventory of Corine data and Urban
Atlas land cover in 44 classes.



Meridian Data
available in .shp .tab .dxf

Contains:

Roads | Water | Urban



ONS Super Output Areas
available in .shp .tab .dxf

Contains:

Lower Output Areas | Middle Output Areas

Ordering Open Data

Open data can be easily ordered on the 'Product Select' page, just click on the expandable menu and add the data you require. No purchase necessary.

Open Data	Details	Image Date	Resolution	Format	Price	Order
1:650k BGS Data	Details	2014	N/A	shp	£0.00	<input type="checkbox"/>
Landcover Maps	Details	2014	1/25	shp	£0.00	<input type="checkbox"/>
English Heritage	Details	2014	1/25	shp	£0.00	<input type="checkbox"/>
EA Flood Data	Details	2014	1/25	shp	£0.00	<input type="checkbox"/>
Meridian Data	Details	2014	1/25	shp	£0.00	<input type="checkbox"/>
ONS Super Output Areas	Details	2014	N/A	shp	£0.00	<input type="checkbox"/>

[Return England](#) [Click to view details](#)

As a UK-based aerial survey specialist, Bluesky uses the very latest technology to ensure its products including imagery, LiDAR and thermal data, are second to none.

Bluesky has unrivalled expertise in the creation of seamless aerial photography and maintains national off-the-shelf coverage of aerial photography, digital terrain models and digital surface models through an on-going 3-year update programme. Bluesky operates the world's first sensor for the simultaneous capture of LiDAR, thermal and aerial photography data and as such is in the enviable position of being able to provide customers with unique and cost-effective solutions.

Bluesky prides itself on its pioneering and agile approach to developing new products and services including National Tree Map™, SoLAR, Air Quality Mapping and Nightsky Mapping™ and is considered a leader in its field.

Welcome to our world...

 www.blueskymapshop.com

 www.bluesky-world.com

 01530 518518


 info@bluesky-world.com

 Bluesky International Ltd
The Old Toy Factory
Jackson Street
Coalville
Leicestershire
LE67 3NR
UK



 www.blueskymapshop.com

 www.bluesky-world.com

 01530 518518

 info@bluesky-world.com

 Bluesky International Ltd
The Old Toy Factory
Jackson Street
Coalville
Leicestershire
LE67 3NR
UK